

**PROJECT**



# INHALT

## TABLE OF CONTENTS

**SOFTTEC**  
KERAMISCHE OBERFLÄCHE

Sicherheit R10 A+B · Feingefühl · Pflegeleicht

WHITE

SEITE 4

GREY

SEITE 6

BEIGE

SEITE 8

TAUPE

SEITE 10

OXID BROWN

SEITE 12

OXID DARK

SEITE 14

TECHNISCHE EIGENSCHAFTEN

## TECHNICAL FEATURES

SEITE 18

# PROJECT

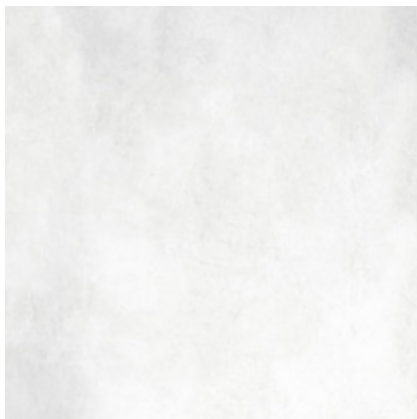
## WHITE

**SOFTTEC**  
KERAMISCHE OBERFLÄCHE

**R10 A+B**  $\pm 10,5$  mm NAT RET



**TP020136N** 30x60 cm PG 390



**TP020160N** 60x60 cm PG 390



**TP0201120N** 60x120 cm PG 549



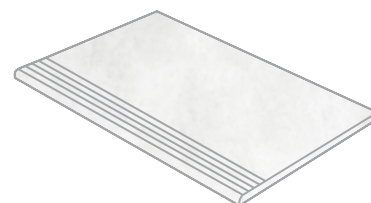
**TP020173N**  
7,2x30 cm PG 690



**TP02015M** Mosaik 5x5 cm  
30x30 cm PG 950



**TP020020D** Cementine  
Dekor Mix 20x20 cm  
im wilden Mix PG 595



**TP0201ST** Stufe  
30x60 cm PG 240



**TP02015S** Sockel  
5,5x60 cm PG 79



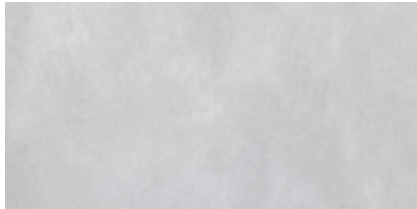
WHITE 60x120 cm • CEMENTINE 20x20 cm

# PROJECT

## GREY

**SOFTTEC**  
KERAMISCHE OBERFLÄCHE

**R10 A+B**  $\pm 10,5$  mm NAT RET



**TP020536N** 30x60 cm PG 390



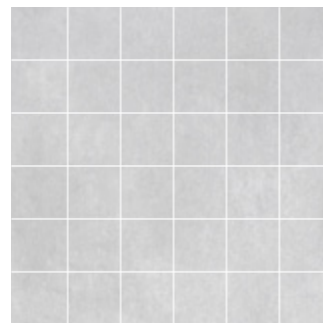
**TP020560N** 60x60 cm PG 390



**TP0205120N** 60x120 cm PG 549



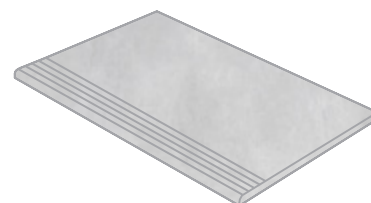
**TP020573N**  
7,2x30 cm PG 690



**TP02055M** Mosaik 5x5 cm  
30x30 cm PG 950



**TP020020D** Cementine  
Dekor Mix 20x20 cm  
im wilden Mix PG 595



**TP0205ST** Stufe  
30x60 cm PG 240



**TP02055S** Sockel  
5,5x60 cm PG 79



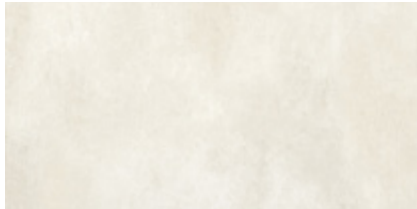
GREY 60x60 cm

# PROJECT

## BEIGE

**SOFTTEC**  
KERAMISCHE OBERFLÄCHE

**R10 A+B**  $\pm 10,5$  mm NAT RET



**TP020236N** 30x60 cm PG 390



**TP020260N** 60x60 cm PG 390



**TP0202120N** 60x120 cm PG 549



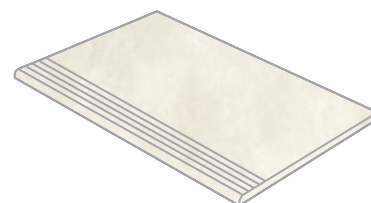
**TP020273N**  
7,2x30 cm PG 690



**TP02025M** Mosaik 5x5 cm  
30x30 cm PG 950



**TP020020D** Cementine  
Dekor Mix 20x20 cm  
im wilden Mix PG 595



**TP0202ST** Stufe  
30x60 cm PG 240



**TP02025S** Sockel  
5,5x60 cm PG 79





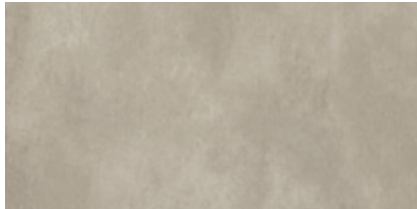
BEIGE 7,2x30 cm / 60x120 cm

# PROJECT

## TAUPE

**SOFTTEC**  
KERAMISCHE OBERFLÄCHE

**R10 A+B**  $\pm 10,5$  mm NAT RET



**TP020336N** 30x60 cm PG 390



**TP020360N** 60x60 cm PG 390



**TP0203120N** 60x120 cm PG 549



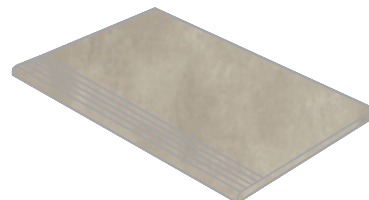
**TP020373N**  
7,2x30 cm PG 690



**TP02035M** Mosaik 5x5 cm  
30x30 cm PG 950



**TP020020D** Cementine  
Dekor Mix 20x20 cm  
im wilden Mix PG 595



**TP0203ST** Stufe  
30x60 cm PG 240



**TP02035S** Sockel  
5,5x60 cm PG 79



TAUPE 60x60 cm

# PROJECT

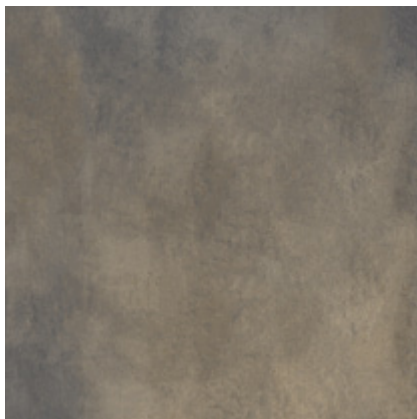
## OXID BROWN

**SOFTTEC**  
KERAMISCHE OBERFLÄCHE

**R10 A+B**  $\pm 10,5$  mm NAT RET



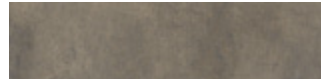
**TP020436N** 30x60 cm PG 390



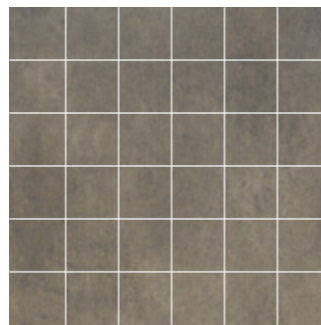
**TP020460N** 60x60 cm PG 390



**TP0204120N** 60x120 cm PG 549



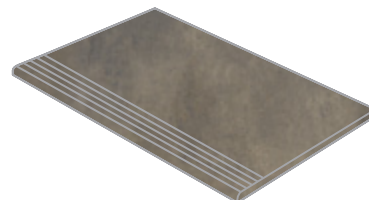
**TP020473N**  
7,2x30 cm PG 690



**TP02045M** Mosaik 5x5 cm  
30x30 cm PG 950



**TP020020D** Cementine  
Dekor Mix 20x20 cm  
im wilden Mix PG 595



**TP0204ST** Stufe  
30x60 cm PG 240



**TP02045S** Sockel  
5,5x60 cm PG 79



Bildrechte: Teamwork Salondesign, Aichach

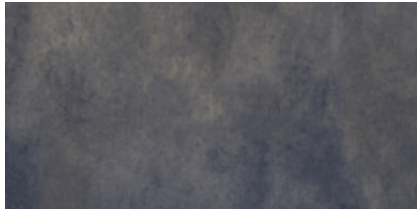
**SALON AM VIKTUALIENMARKT MÜNCHEN**  
**OXID BROWN 60x120 cm**

# PROJECT

## OXID DARK

**SOFTTEC**  
KERAMISCHE OBERFLÄCHE

**R10 A+B**  $\pm 10,5$  mm NAT RET



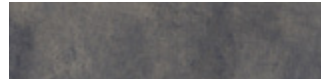
**TP020636N** 30x60 cm PG 390



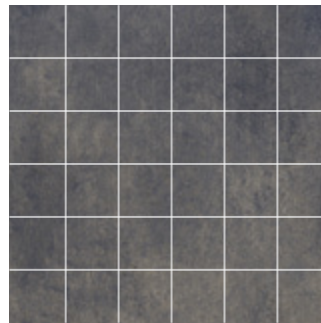
**TP020660N** 60x60 cm PG 390



**TP0206120N** 60x120 cm PG 549



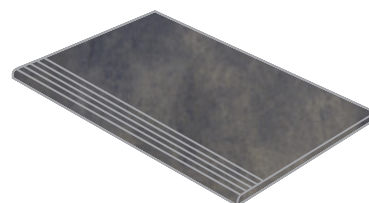
**TP020673N**  
7,2x30 cm PG 690



**TP02065M** Mosaik 5x5 cm  
30x30 cm PG 950



**TP020020D** Cementine  
Dekor Mix 20x20 cm  
im wilden Mix PG 595



**TP0206ST** Stufe  
30x60 cm PG 240



**TP02065S** Sockel  
5,5x60 cm PG 79



OXID DARK 60x60 cm











OXID DARK 7,2x30 cm / 60x120 cm

TECHNISCHE EIGENSCHAFTEN TECHNICAL FEATURES		Norm UNI EN ISO UNI EN ISO Norm	Vorgeschriebener Wert Fixed Value	Durchschnittswert Mean value
	Abmessungen Sizes	10545/2	Länge – Length ± 0,6% Breite – Width ± 0,6% Stärke – Thickness ± 5,0% Kantengeradheit – Linearity ± 0,5% Rechtwinkligkeit – Wedging ± 0,5% Ebenflächigkeit – Warpage + 0,5%	konform konform konform konform konform konform
	Wasseraufnahme Water absorption	10545/3	E ≤ 0,5%	E ≤ 0,5%
	Biegezugfestigkeit Flexion resistance	10545/4	R ≥ 35 N/mm <sup>2</sup>	R ≥ 35 N/mm <sup>2</sup>
	Temperaturwechselbeständigkeit Thermal shock resistance	10545/9	Gefordert Required	Widerstandsfähig Resistant
	Frostwiderstandsfähigkeit Frost resistance	10545/12	Gefordert Required	Widerstandsfähig Resistant
	Chemikalienfestigkeit Chemical resistance	10545/13	Gefordert Required	Widerstandsfähig Resistant
	Fleckenbeständigkeit Stain resistance	10545/14	Gefordert Required	Widerstandsfähig Resistant
	Rutschhemmung Slip resistance	DIN 51130 DIN 51097	Nach Anforderung If needed	R10 A+B

	Stärke Thickness	10,5 mm		
--	---------------------	---------	--	--

VERPACKUNGSEINHEIT PROJECT PACKING						
	Karton Pieces	QM Sq. Mt	KG kg	Karton Pieces	QM Sq. Mt	KG kg
30 x 60 cm	5	0,881	19,6	40	35,24	782
60 x 60 cm	3	1,062	23,6	40	42,48	943
60 x 120 cm	2	1,412	33,4	36	50,83	1204
7,2 x 30 cm	44	0,938	20,8	44	41,27	916
Mosaik 5 x 5 cm / 30 x 30 cm	6	0,54	10,9	–	–	–
Stufe 30 x 60 cm	5	0,881	19,6	–	–	–
Sockel 5,5 x 60 cm	14	–	9,3	–	–	–

VERPACKUNGSEINHEIT CEMENTINE PACKING						
	Karton Pieces	QM Sq. Mt	KG kg	Karton Pieces	QM Sq. Mt	KG kg
20 x 20 cm	16	0,62	12,8	72	44,64	921

Die in dieser Druckausgabe enthaltenen Informationen (Gewicht, Farbe, Abmessungen usw.) sind so exakt wie möglich, aber nicht gesetzlich verbindlich.  
Die Farben können aufgrund des Druckvorgangs verfälscht sein.



